



October 2011

Open Days Subsidiarity
Thematic Workshop

5th Subsidiarity Conference

Action Plan 2011-2012

REGPEX, Regional
parliamentary exchange

Consultations



Subsidiarity Newsletter

THE SUBSIDIARITY MONITORING NETWORK

Since its establishment in 2007, the Subsidiarity Monitoring Network (SMN) has regularly consulted its members on compliance of EU initiatives with the subsidiarity principle. The network was set up to facilitate the exchange of information between local and regional authorities in the European Union and the European institutions regarding EU initiatives which, once adopted, will have a direct impact on these authorities and the policies for which they are responsible. At present it has 132 members and operates through its website, where partners are also free to submit their subsidiarity assessments, www.cor.europa.eu/subsidiarity.

This first news brief provides information on the activities carried out through the SMN in 2011, its main events and future projects. It will be published twice a year.



"Subsidiarity means allocating responsibilities to the most appropriate levels of government, based on the principle that decisions should be taken at the closest possible level to the public"

Ramón Luis Valcárcel Siso

Coordinator of the SMN and First Vice-President of the CoR

www.cor.europa.eu/subsidiarity

Open Days Subsidiarity Thematic Workshop

Events

This year, the subsidiarity thematic workshop organised as part of the Open Days will focus on the integration of immigrants at local and regional level. It will take place on 12 October 2011 (room JDE 51). Migrant integration is a major challenge confronting European societies. It is also an area which serves as an excellent illustration of the application of the subsidiarity principle: policies are implemented and deliver results at local, regional and national levels, but are also based on directions agreed at EU level and depend on an effective partnership between all actors concerned (multi-level governance).

This SMN subsidiarity thematic workshop will show-case the experience of

cities and regions that have participated in the consultation on the Second European Agenda for Integration (see below, in the "consultations" section). It will also illustrate the CoR approach for subsidiarity monitoring upstream in EU policymaking, through a discussion with representatives of the Commission and the European Parliament.



Open Days Subsidiarity Thematic Workshop

Chaired by CoR First Vice-President, Mr Ramón Luis Valcárcel Siso, coordinator of the Subsidiarity Monitoring Network and President of the Autonomous Community of Murcia, this workshop will bring together the following speakers:

- ❖ **Mr Stefano Manservigi**, Director-General, Directorate-General HOME, European Commission
- ❖ **Ms Jean Lambert**, Member of the European Parliament (UK/Greens/EFA)
- ❖ **Mr Dimitrios Kalogeropoulos**, CoR Member (EL/EPP), Rapporteur on the European Second European Agenda for Integration, CIVEX commission
- ❖ **Mr Walter Kindermann**, Director-General for Integration Affairs, Hessian Ministry of Justice, Integration and Europe

Events

- ❖ **Mr Vittorio Solazzi**, President of the Regional Parliament of Marche

The speakers will present the main challenges faced at local and regional level regarding the integration of migrants and will highlight successful experiences. They will also discuss concrete initiatives at EU level to support local and regional action, in the context of the recently-released Communication of the European Commission on the Second European Agenda on Integration.

A call for a new working group on integration within the SMN Action Plan is to be launched at the end of the workshop.

5th Subsidiarity Conference

Subsidiarity conferences are major political events organised by the CoR, bringing together key actors involved in subsidiarity monitoring.

The latest subsidiarity conference focused on subsidiarity monitoring one year after the entry into force of



Action Plan 2011-2012

The proposed TEN-T theme has raised a lot of interest among SMN partners. Led by the Swedish region of Västra Götaland and Gothenburg, the group will include about 10 partners. A kick-off meeting is to be organised in November.

Interested partners are invited to join forces within the TEN-T group. As for the integration of migrants, a call is to be launched during the Open Days subsidiarity thematic workshop on 12 October, for a new group to focus on active participation of migrants, to be led by the regional parliament of the Italian Marche region. SMN partners will have until the end of October to express their interest in participating.

Activities

the Lisbon Treaty. It took place in Bilbao, Basque Country, Spain, on 21 March 2011.

The Conference consisted of two sessions. The first focused on the implementation of EU legislation at local, regional and national level and on the links between the different spheres of governance involved in the policymaking process.

The second session focused on the role of regional parliaments in the new institutional framework created after the entry into force of the Lisbon Treaty. Representatives of both regional and national parliaments discussed the best ways to implement powers derived from the new Treaty and the Early Warning System. In particular, special attention has been given to the question of how to build up the institutional capacity of regional parliaments to perform subsidiarity evaluations in the framework of the Early Warning System.



REGPEX, Regional parliamentary exchange

Several regional parliaments highlighted the need for easy access to relevant information, in order to be able to perform their subsidiarity monitoring properly.

Therefore, the First Vice-President of the CoR, Mr Valcárcel Siso, announced in Bilbao the launch of an interactive database, REGPEX, which will provide subsidiarity-related information. It will enable opinions of

the regional parliaments to be published and accessed in the context of the Early Warning System. This subsection of the SMN website will also contain a password-protected forum facilitating exchange of information between regional parliaments. A first version of REGPEX is expected to be operational at the end of 2011.

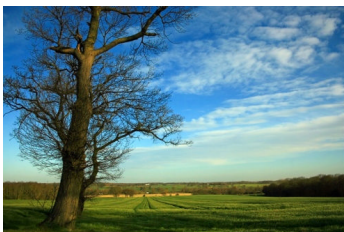
Regpex

Recent consultations

The Subsidiarity Monitoring Network has submitted 3 targeted consultations to its members since January:

► **EU Framework for National Roma Integration Strategies up to 2020.** The consultation was launched on 16 June 2011 and concluded on 5 August 2011. The final report of the consultation has been sent to the CoR rapporteur, Mr Alvaro Ancisi (IT/EPP).

► **Consultation on Energy Efficiency.** The consultation ran from 6 July until 19 August. A final report including possible reasoned opinions from national parliaments will be made available before the next CoR plenary session in December.



A targeted consultation on the review of **EU Air Policy** has been launched mid-October and will run until the beginning of December.

The report will be transmitted to the rapporteurs, Mr Cor Lamers (NL/EPP) in December so that he can present his draft opinion at the beginning of January 2012. The questionnaire is available on the SMN website.

Open consultations

SMN partners can also submit their observations through open consultations on any EU initiative, even if the CoR issues no opinion. In this context, SMN partners submitted 15 contributions, commenting on six EU initiatives. All contributions have been uploaded onto the SMN website and sent to the relevant commission secretariats where the CoR has decided to issue an opinion on the subject matter.

Since 2009, in accordance with its Cooperation Protocol with the European Commission, the CoR has been participating in the assessment of local and regional impact of certain European Commission proposals.

This collaboration provides local and regional authorities with a unique opportunity to influence the EU decision-making process as early as the pre-legislative phase. This in turn helps the European Commission to collect quantitative and qualitative data from the local and regional level in order to better assess the local and regional impact of its initiatives.

In 2011, the SMN contributed to one impact assessment: Assessment of Territorial Impacts of the EU Life + instrument.

Consultations

► **Less bureaucracy for citizens: promoting free movement of public documents and recognition of the effects of civil status records.**

The consultation ran from 13 July until 2 September. All contributions were forwarded to the rapporteur, Mr McGowan (IE/ALDE), and are available on the SMN website in English and in their original language.

The opinion is to be submitted for adoption to the CIVEX commission on 18 October and to the CoR Plenary on 14-15 December 2011.



Ongoing consultation

Impact Assessment Consultations

The consultation ran from February until 15 April. A total of 40 questionnaires were submitted by local and regional authorities from 12 EU Member States. The final report has been transmitted to the European Commission.

Although not specifically carried out within the context of an impact assessment, a consultation was held ahead of the publication of the Second European Agenda on Integration. About 50 local and regional authorities in 11 Member States contributed between 18 February and 15 April 2011. The report was forwarded to the European Commission ahead of the publication of the Communication on the Agenda and is available online on the SMN website.

Why becoming a partner?

By joining the Subsidiarity Monitoring Network (SMN), local and regional authorities, and their associations, find a way:

- ➔ To have their voice heard within the EU decision-making process in a number of policy areas (economic, social and territorial cohesion; transport; education, vocational training, youth and sport; culture; public health; trans-European networks; environment, including climate change, and energy);
- ➔ To get upstream access to information on future EU policies and legislation;
- ➔ To contribute to the definition of EU policies and legislation, even at a pre-legislative stage (through consultations for Impact Assessments);
- ➔ To share best practices in the articulation of the various spheres of competence in a number of policy areas (economic, social and territorial cohesion; transport; education, vocational training, youth and sport; culture; public health; transeuropean networks; environment, including climate change, and energy).



Who can become a partner?

- ➔ Parliament or assembly representing a region with legislative powers
- ➔ Government or executive representing a region with legislative powers
- ➔ Local or regional authority without legislative powers
- ➔ Association of local or regional authorities

Partners must come from one of the 27 European Union Member States.

How to apply?

By filling out the admission form. Should you already be a member of any associations or networks or already have participated in consultations organised by the Committee of the Regions and/ or other EU institutions (e.g. by the European Commission), then please mention this in your email when sending us your application.

The application of your institution or organisation will then be submitted for approval to the President and First Vice-President of the Committee of the Regions. Their decision will be further notified by letter.

Joining the SMN is totally free of charge however partners should be aware that the network is fully dependent on their active engagement.



Events

This section is dedicated to advertising partners' events.

Please let us know of meetings, seminars or conferences that you are organising and we will publish them here as well as on the SMN website.

For further information please contact:
Unit E2 - Subsidiarity & Europe 2020
& CoM & EGTC

subsidiarity@cor.europa.eu
www.cor.europa.eu/subsidiarity